



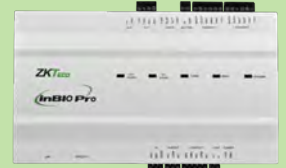
inBio 460-PRO

INBIO PRO-SERIES

IP-Based Access Control Panels



inBio 260-PRO



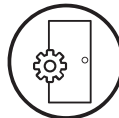
inBio 160-PRO

InBioPro Series is a next-generation series of fingerprint & card-matching panels having advanced access control features including anti-passback, first-card opening, multi-card opening, duress password entry, embedded card verification and supports real-time Push protocol.



Door Control and More:

Along with relay contacts for controlling door locks, easily programmable auxiliary relays can be used for additional control and interface to lights, alarms, annunciators, intrusion detection panels, or even extra locking devices or gate controllers.



Choice of Readers:

For fingerprint-matching, select only ZKAccess FR-Series slave fingerprint readers. Full range of prox card readers supported. ZKAccess KR-Series slave card readers are stylish and waterproof. InBio Pro supports any Wieland output reader, including HID Prox, iClass, and Xceed ID Multi-Technology.



Communication:

InBio Pro panels install easily on your network and support both TCP/IP and RS-485 communication. Auto-discovery tool allows setting and modification of network parameters directly and easily.



Options:

InBio Pro panels come in three sizes to suit project needs and reduce the cost of unused capacity. 1-door, 2-door, and 4-door models can be mixed and matched in an optimized system architecture.



Lowest Total Cost of Ownership:

InBio Pro panel firmware can be upgraded in the field. New controller features can be loaded without any advanced tools, extending and expanding the value of your investment.



Built-In Advanced Access Control:

Anti-Pass-back, First-Card Opening, Multi-Card Opening, Duress Password Entry, and Auxiliary Input/Output Linkages are built into the firmware.



Capacity:

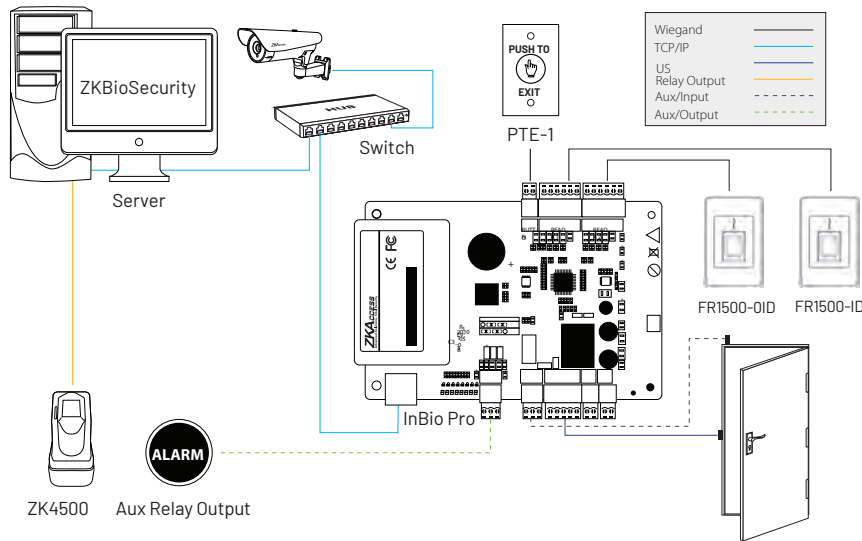
20,000 fingerprints and 60,000 card holders. Panel is backed up in real-time in on-board optional SD card. Data is preserved if power is lost. Panel continues to operate even if network connection is interrupted.



For Software Developers:

Free SDK is available for integrators and OEM's to integrate the InBio Pro panels with their existing security or personnel management applications. Upon request, ZKAccess can also customize InBioPro firmware to meet any custom requirements.

TYPICAL INSTALLATION:



OPTIONAL ACCESSORIES SPECIFICATION:



KR500H



KR502H



KR503H



PTE-1



Prox Card



Proxy Key Fob

	InBio 160-PRO	InBio 260-PRO	InBio 460-PRO
Software Compatibility	ZKBioSecurity software, only 1 Door	ZKBioSecurity software, only 2 Door	ZKBioSecurity software, only 4 Door
Number of Doors Controlled	4 (2 RS-485 readers and 2 Wiegand readers)	8 (4 RS-485 readers and 4 Wiegand readers)	12 (8 RS-485 readers and 4 Wiegand readers)
Number of Readers	26-bit Wiegand, others upon request	26-bit Wiegand, others upon request	26-bit Wiegand, others upon request
Types of Readers	3 (1-form C relay for lock and 1-form C relay for Aux)	6 (2 for Exit button, 2 for Door status, 2 for Aux)	12 (4 for Exit button, 4 for Door status, 4 for Aux)
Number of Inputs	2 (1-from C Relay for Lock and 1-form C Relay for Aux Output)	4 (2-form C Relay for Lock and 2-form C relay for Aux Output)	8 (4-form C Relay for Lock and 2-form C Relay for Aux Output)
Number of Outputs Capacity	20,000 fingerprints / 60,000 card holders	20,000 fingerprints / 60,000 card holders	20,000 fingerprints / 60,000 card holders
Number of Inputs Capacity	100,000	100,000	100,000
Log Events Capacity	9 lbs (4.08 kg)	10 lbs (4.5 kg)	10 lbs (4.5 kg)
Communication	TCP/IP	TCP/IP	TCP/IP
Enclosure	Powder Coated Aluminium Wall Mount or DIN rail	Powder Coated Aluminum Wall Mount or DIN rail	Powder Coated Aluminum Wall Mount or DIN rail
Recommended Power	12V DC, 1.5A	12V DC, 1.5A	12V DC, 1.5A
Dimensions	7.5 x 5.5 inches	7.5 x 5.5 inches	9 x 5.5 inches

ZKTeco USA

1600 Union Hill Rd., Alpharetta GA 30005

Phone: (862) 505 - 2101 • Fax: (862) 204 - 5906 • sales@zktcoua.com • www.zktcoua.com

© Copyright 2019. ZKTeco Inc. ZKTeco Logo and ZKTeco USA Logo have registered trademarks of ZKTeco or a related company.

All other product and company names mentioned are used for identification purposes only and may be trademarks of their respective owners.

All specifications are subject to change without notice. All rights reserved.